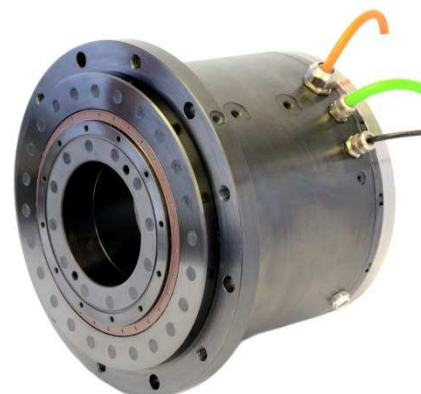


# SIROS®

## Evolvere®-Direct Drive

This system combines a torque motor with high power density, a high precision motor feedback system as well as a stiff cross roller bearing. By optimizing the design it was possible to reach a maximum hollow shaft diameter. The ASSAG EVOLVERE® Direct Drive is compatible to controllers of renowned supplier such as Fanuc and Siemens.

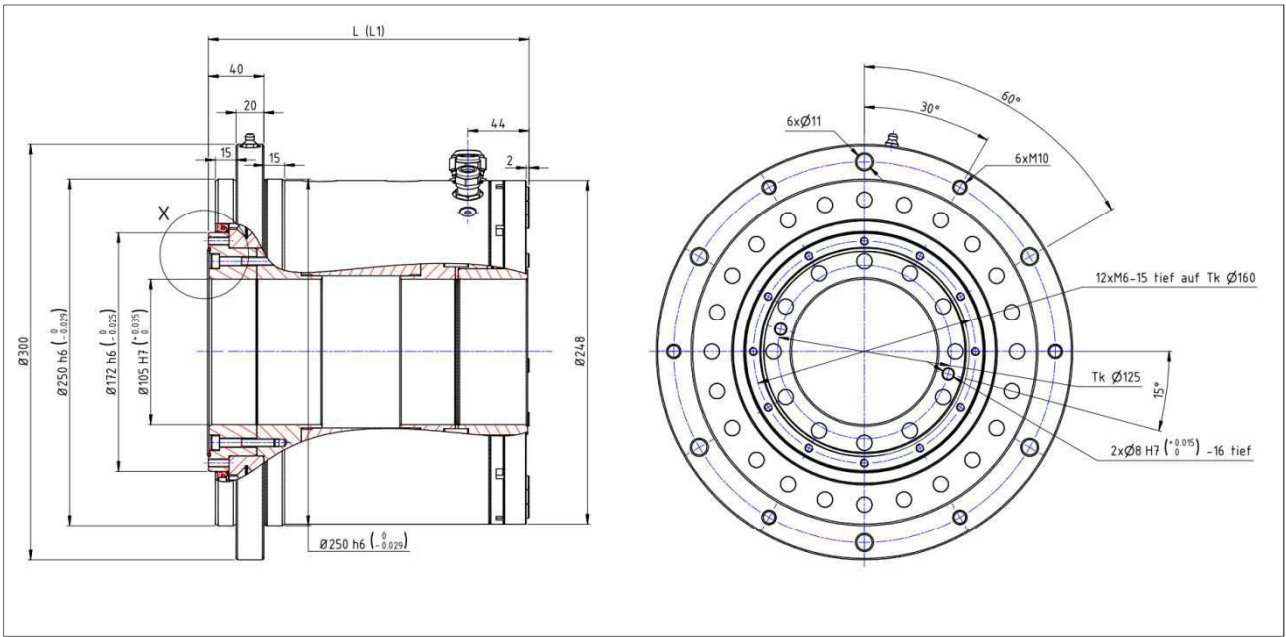


### Technical specifications:

Antrieb <i>Actuator</i>	Einheit <i>Unit</i>	ohne Kühlmantel / <i>without Cooling Jacket</i>		mit Kühlmantel / <i>with Cooling Jacket</i>		
		Version A	Version B	Version A	Version B	
Spitzendrehmoment <i>Peak torque</i>	Tp	Nm	380	309	380	309
Dauerdrehmoment <i>Continuous torque</i>	Tc	Nm	73	65.6	160	169
Stillstandsmoment <i>Stall torque</i>	Ts	Nm	73	49.8	150	133
Drehmomentkonstante <i>Torque constant</i>	Kt	Nm/Arms	10	15.6	10	15.6
Maximale Drehzahl <i>Maximum Speed</i>		rpm	300	450	300	450
Spannungskonstante (L-L, 20°C) <i>Back EMF constant (L-L, 20°C)</i>	Ku	Vrms/(rad/s)	13.5	9	13.5	9
Motorkonstante <i>Motor constant</i>	Km	Nm/VW	4.13	4.44	4.13	4.44
Anzahl Pole <i>Number of poles</i>			32	44	32	44
Widerstand (L-L, 20°C) <i>Resistance (L-L, 20°C)</i>	R20	Ω	2.59±5%	8.19	2.59±5%	8.19
Induktivität (L-L, 20°C) <i>Inductance (L-L, 20°C)</i>	L1	mH		41.9		39.5
Spitzenstrom <i>Peak current</i>	Ip	Arms	48.1	28.1	48.1	28.1
Dauerstrom <i>Continuous current</i>	Ic	Arms	8.2	4.28	18.2	11.7
Stillstandstrom <i>Stall current</i>	Is	Arms	8.2	3.24	16.7	8.85

Version A: Temperature monitoring by integrated thermistor.  
 Version B: Individual temperature monitoring of each winding

Measurements



Version	Blechpaket / Iron core	L [mm]	L1 [mm] mit Bremse / with brake
A	30	k.A.	k.A.
	50	k.A.	k.A.
	70	215	231
	...	...	...
B	30	k.A.	k.A.
	50	k.A.	k.A.
	70	234	250
	...	...	...

Ordering code

Baureihe Serie	Baugröße Size	Version	Blechpaket Iron core	Messsystem Feedback system	Kühlmantel Cooling jacket	Bremse Brake	Spezialausführung Customized version
SIROS®	300	A	30	B18	C	B	X
				B26			
				F23			
		B	70	F27	-	-	
				M23			
				M27			
...	S26						
S29							
<b>SIROS - 300A - 70 - F23 - C - B - X</b>							

Motor Feedback System

Bezeichnung Designation	Protokoll Protocol	Auflösung Resolution
B18	BISS	18 bit
B26		26 bit
F23	FANUC	High Type A (23 bit)
F27		High Type B (27 bit)
M23	Mitsubishi	23 bit, 4 wire
M27		27 bit, 4 wire
S26	Siemens DRIVE-CLiQ	26 bit
S29		29 bit

